



POWERTEC Generator Set

Powered by Yuchai YC6C1320-D31 Engine

Model: PYC1125B Prime Power: 800KW/1000KVA Standby Power: 900KW/1125KVA

Genset Fundamental Characteristics

- ◆ 230/400VAC, 50HZ 0.8PF 3 Phases, 4 wires output
- ◆ Frequency drop ≤3%
- ◆ Voltage modulation ≤0.3%
- ◆ The steady state frequency ≤0.5%
- ◆ The steady state voltage deviation ≤±1%
- ◆ The transient frequency deviation ≤+10% ≤-15%
- ◆ The transient voltage deviation ≤+20% ≤-15%
- ◆ Frequency recovery time ≤3S
- ◆ Voltage recovery time ≤1S(Voltage±3%)
- ◆ THF (Telephone Harmonic Factor) <3
- ◆ TIF (Telephone Influence Factor) <50
- ◆ Comply to Standard NEMA MG1-22.43
- ◆ Standard equipped with ambient temperature 40°C
Connecting radiator
- ◆ Inbuilt shock absorber has high performance on shock absorption.
It's easy to be transported and installed without embedding and
Fixing rubber shock pad between the genset and ground

Genset Standard Configuration

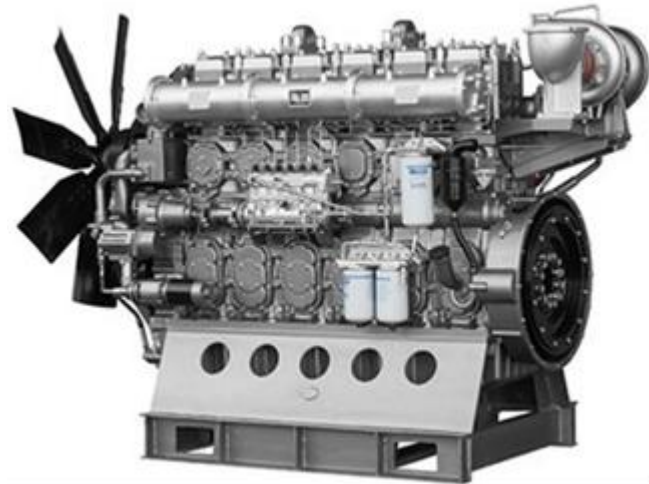
- ◆ Guangxi Yuchai Engine
- ◆ Brushless synchronous alternator
- ◆ POWERTEC intelligent controller
- ◆ 40°C standard ambient temperature
Water radiator
- ◆ Modularized case circuit breaker (3P)
- ◆ Float Battery Charger
- ◆ Battery connect wire
- ◆ Steel base frame(include shock absorbers)
- ◆ Bottom oil tank
- ◆ Bellows、exhaust bend
- ◆ Manual book and files

Genset Optional Configuration

- ◆ 24V Starter Batteries
- ◆ Daily Fuel Tank
- ◆ Oil-water separator
- ◆ Warning function of low water level, low fuel oil
- ◆ Automatically monitoring & controlling system of
City power
- ◆ Coolant heater
- ◆ Oil heater
- ◆ Heat exchanger--Water cooling Tower System
- ◆ Soundproof Canopy/ Trailer
- ◆ ISO container
- ◆ Design and construction of environmental protection
Engineering for the Genset room

Performance Description of Diesel Engine

- ◆ Model: **Yuchai YC6C1320-D31**
- ◆ Construction: High strength cylinder block, alloy forged steel crankshaft, alloy steel connecting rod and internal cooling oil pipe piston make the engine more durable.
- ◆ Intake: Turbo charged/ Intercooler
- ◆ Four valves + pressurized intercooling technology, sufficient air intake, full combustion and low fuel consumption.
- ◆ Technology of electronic controlled monomer pump is adopted, operation smoothly, has good speed regulation and strong loading capacity.
- ◆ High quality alloy cast iron cylinder body with curved surface reinforced mesh structure, high strength vermicular cast iron cylinder cover, double insurance anti-punching cylinder cushion structure, unique cooling technology at the bottom of cylinder cover, high reliability
- ◆ With Yuchai proprietary scraping carbon self-cleaning technology, lubricating oil consumption is low.
- ◆ Adopting electric pre-fuel technology to effectively protect motion pairs and improve engine life.
- ◆ Dual energy start up
- ◆ One cylinder and one lid structure, with maintenance window on the side of the machine body for easy maintenance.
- ◆ Meet Chinese T3 standards of non road emission and European S3A.
- ◆ The YC6T series engine is a product developed independently according to the advanced technology of large engines company in domestic and oversea. Four valves, supercharged intercooler and electronic controlled monomer pump are optimized and verified by advanced combustion development technology of Yuchai, it has the characteristics of energy saving, environmental protection, high reliability, strong loading capacity and good maintainability.
- ◆ Engine Operating Environment Description:
The engine can work under the following conditions without modulating power:
1800r/min engine--altitude less than 1000 m, ambient temperature less than 40 °C
1500r/min engine--altitude less than 1000 m, ambient temperature less than 40 °C



Performance Description Alternator

- ◆ Optional Alternator: **Stamford / Marathon/ Faraday/Engga/Mecc Alt**
- ◆ Brushless, 4 pole rotating magnetic field, single bearing with protective cover
- ◆ Insulation: H Class.
- ◆ Standard IP23 grade
- ◆ Cooling system
- ◆ AC exciter, rotate rectifying unit
- ◆ Surface of stator winding is covered with damp-proof epoxy Insulation varnish after impregnation proceeding
- ◆ Rotor and exciter is proceeded with high temperature insulating resin, Will be more applicable for harsh environment.
- ◆ Rotor dynamic balancing comply to standard BS5625, class 2.5
- ◆ Sealed with advanced lubricating grease prolongs life of bearing.



Notes: Above data of alternator comes from Stamford. Proper specification is subject to the practice alternator if customers choose other alternator

Standard Detection Function

- ◆ 3 phases voltage U_a, U_b, U_c
- ◆ Frequency F_1
- ◆ Apparent power PR
- ◆ Coolant temperature WT
- ◆ Oil pressure OP
- ◆ Speed RPM
- ◆ HC timer 99999 hours records
- ◆ Maximum cumulative times of starting can reach 999999
- ◆ 3 phases current I_a, I_b, I_c
- ◆ Active power PA
- ◆ Power factor PF
- ◆ Temperature $^{\circ}C$ display
- ◆ $KPa/Psi/Bar$ display
- ◆ Battery voltage V



Standard Protection Function

Genset Protection

- ◆ Programmable alarm and status input
- ◆ Emergency stop

Engine Protection

- ◆ Stop for over speed
- ◆ Alarm/Stop for low oil pressure
- ◆ Alarm/Stop for coolant high temperature
- ◆ Stop for failure to start/jigger
- ◆ Indication of sensor fault
- ◆ Alarm for low/high battery voltage
- ◆ Alarm for shortage of battery

Alternator Protection

- ◆ Stop for over high/low voltage
- ◆ Alarm/stop for over current
- ◆ Stop for loss of voltage detection signal
- ◆ Stop for over frequency
- ◆ Stop for low frequency

Control System Components

- ◆ Control switch—manual/auto/stop/start
- ◆ Screen menu selection button
- ◆ Setting button
- ◆ Fault status indicators
- ◆ Emergency stop button
- ◆ Digital display



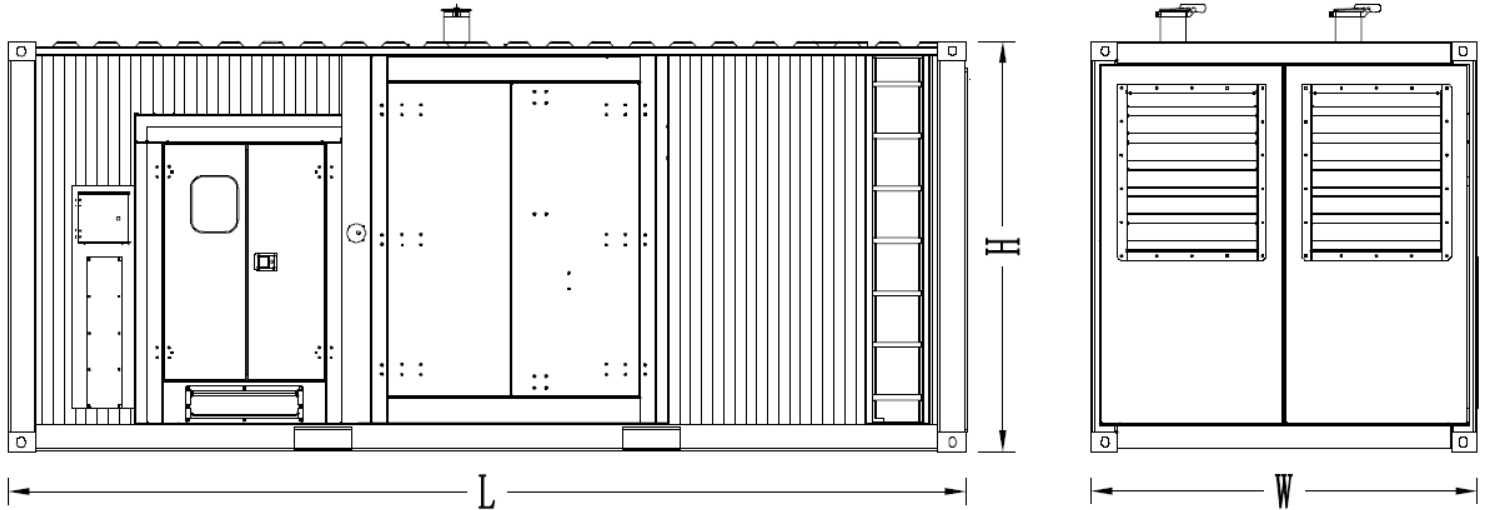
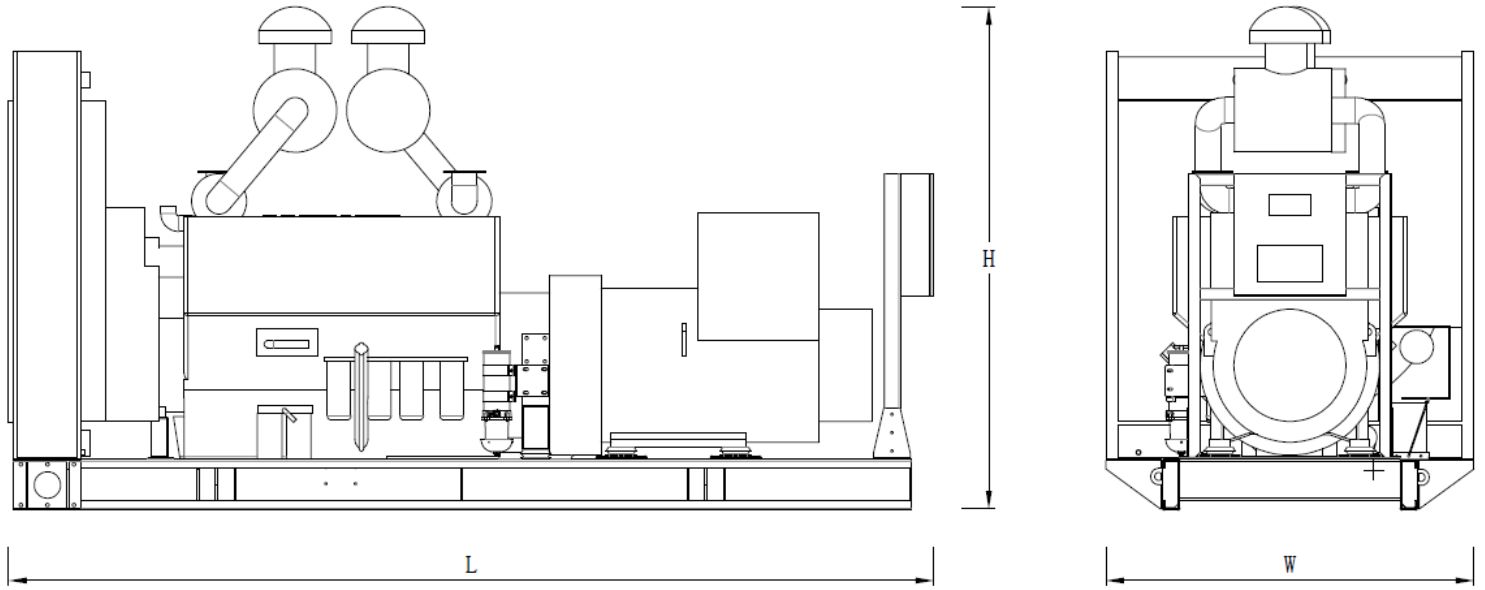
Communication Interface

(optional function)

- ◆ International standard MODBUS communication protocol with error detection as well as RS232/ RS485 (RS485 is opto-isolated type) has functions of remote control, telemetry and telesignalling, which are facilitate to monitor genset.

Notes: Above data of controller comes from POWERTEC GC7110.2 Proper specification is subject to customers' practice controller if other controller is selected.

Genset	Model	PYC1125B
	Prime Rating (kw)	800
	Standby Rating (kw)	900
	Prime current(A)	1443
	Frequency(hz)	50
Engine & Alternator	Engine Model	YC6C1320-D31
	Gross Engine output-Prime (kw)	880
	Gross Engine output-Standby (kw)	968
	Bore * stroke (mm)	200*210
	Cylinders and structure	6 In line
	Displacement(Liter)	39.58
	Compression Ratio	14.5:1
	Intake way	Turbocharged/ Air-Air intercooler
	Max intake resistance (KPa)	5
	Air intake (m3/h)	4980
	Max exhaust back pressure (KPa)	10
	Exhaust gas flow (m3/h)	14410
	Exhaust temp (°C)	500
	Cooling way	Water Radiator & Fan
	Fan exhaust flow (m3/min)	1800
	Coolant capacity (L)	197
	Highest water temperature(°C)	107
	Minimum air opening to room (m2)	6.0/5.4
	Thermostat range (°C)	75-85
	Max oil temperature (°C)	120
	Lubrication system oil capacity (L)	175
	Fuel consumption(L/H)	219.6
	Standard Governor/Class	Electronic control
	Optional Alternator Model	Marathon--- MX-850-4 Engga----- EG400-900N Stamford---- S6L1D-E4 Faraday----- FD6C1-4
	Rated Voltage(V)	400/230
	Output Way	3 Phases, 4 wires
	Rated power factor	0.8
	Exciter	Brushless, Self-exciter
Max voltage regulation	±1%	
Phase	3	
Protection class	IP21-23	
Insulation class	H	
Controller	Brand and Model	POWERTEC GC7110.2



Type	Dimension mm (L*W*H)	Weight KG	Fuel Tank Capacity L
Open Type	4961*1812*2564	7780	-
Silent Type	12192*2438*2896	14580	2000

Notes:: Above data are for reference only. Specific size is subjected to actual measurement.

Contact Way

Powertec Generator System Co., Ltd

Add: Danshui Yanna Industry Zone, Huiyang, Huizhou, Guangdong, China

Tel: 0752-3911119 / 0752-3911118

FAX: 0752-3911110

Web: www.powertec.com.cn Email: sales@powertecgs.com