

PYC550B

Prime Power:400KW/500KVA Standby Power: 440KW/550KVA Voltage: 400VAC

Powered by Yuchai YC6T660L-D20 Engine

Genset Performance

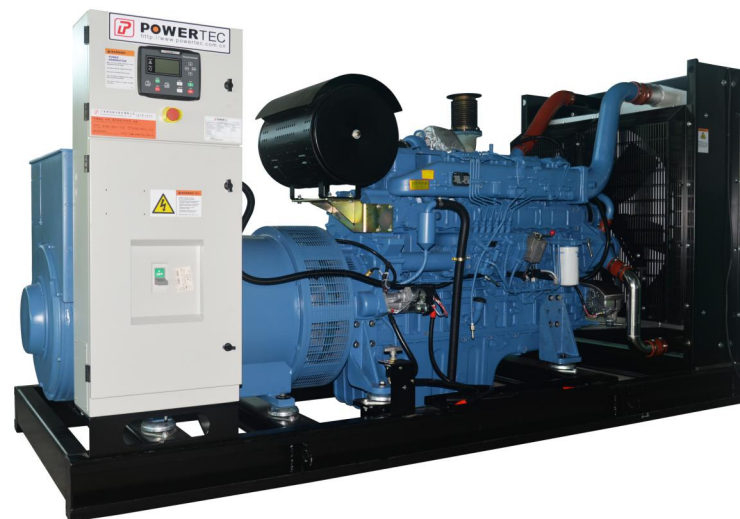
- 230/400VAC, 50Hz, 0.8PF, 3 Phases 4 wires
- Frequency drop $\leq 3\%$
- Voltage regulation $\leq 0.3\%$
- The steady state frequency $\leq 0.5\%$
- The steady state voltage deviation $\leq \pm 1\%$
- The transient frequency deviation $\leq +10\% \leq -15\%$
- The transient voltage deviation $\leq +20\% \leq -15\%$
- Frequency recovery time $\leq 3S$
- Voltage recovery time $\leq 1S(\text{Voltage} \pm 3\%)$
- THF (Telephone Harmonic Factor) < 3
- TIF (Telephone Influence Factor) < 50
Comply to Standard NEMA MG1-22.43
- Built-in vibration isolator with high performance on shock absorption.

Standard Configuration

- Cummins Engine
- Brushless synchronous alternator
- POWERTEC intelligent controller
- 40°C standard ambient temperature (50°C Optional)
- Molded case circuit breaker (3P)
- Float battery charger
- Battery connect wire
- Steel base frame
- Silencer, bellows, exhaust bend
- Manual book and files

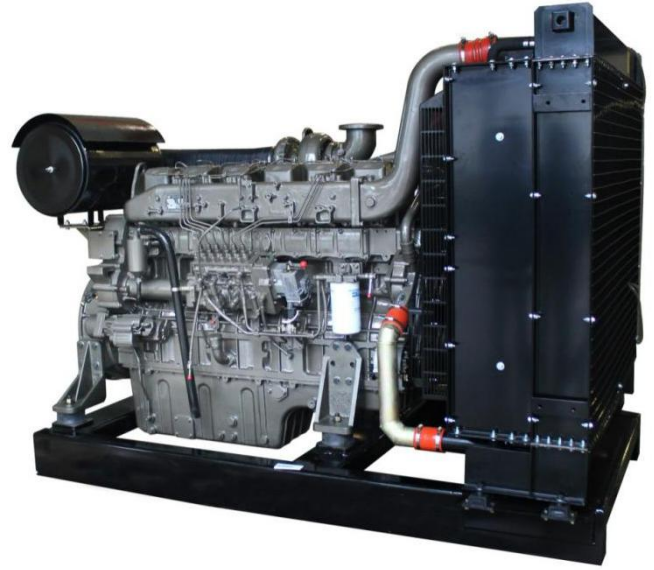
Optional Items

- Starting batteries
- Fuel tank
- Oil-water separator
- Sensor for low coolant level, low fuel/oil level
- Automatically monitoring & controlling system of city power
- Coolant heater
- Oil heater
- Heat exchanger--Water cooled tower system
- Soundproof canopy
- Trailer
- Design and construction of environmental protection
- Engineering for the Genset room



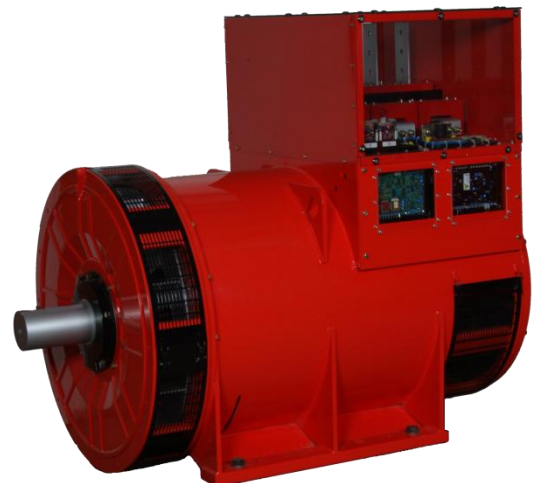
Diesel Engine

- Model: YC6T660L-D20
- Construction: High strength cylinder block, reinforced crankshaft and alloy steel connecting rod make the engine more durable and have lighter and more compact structure in similar products.
- The engine body and other main structures have been long tested to ensure the high reliability of the whole machine.
- Integrated cylinder head and water outlet main pipe design, reduce sealing cover and improve sealing reliability.
- Environment: The engine can work normally under the following conditions without de-rating:
 - A. 1800r/min engine--altitude less than 1500m (5000ft), ambient temperature less than 40 °C(104° F).
 - B. 1500r/min engine--altitude less than 1310m (4300ft), ambient temperature less than 40 °C(104° F)But engine working environment conditions exceed above, the engine output power will de-rate 4% as altitude increase each 300m(1000ft) at the altitude is higher than 1500m (5000ft), Also it will de-rate 2% as temperature increase every 11 °C(1% de-rating ,when temperature increase each 10° F) in the ambient temperature is higher than 40°C(104° F)



Alternator

- Optional brands: **Stamford / Marathon / Faraday / Engga / Mecc Alt**
- Brushless, 4 pole rotating magnetic field, single bearing with protective cover.
- Insulation: H Class.
- IP Class: IP23
- Cooling system
- AC exciter, rotate rectifying
- Rotor and exciter made with high temperature insulating resin, to satisfy tough environment.
- Rotor dynamic balancing complys for BS5625, class 2.
- Sealed with advanced lubricating grease to prolong life of bearing.



Notes: Above data of alternator comes from Stamford. Specification may alternated without advance notice.

Standard

- 3 phases voltage: Ua, Ub, Uc
- Frequency F1
- Apparent power PR
- Power factor PF
- Coolant temperature WT
- Temperature °C display
- Oil pressure OP
- Engine speed
- 3 phases current: La, Lb, Lc
- Active power PA
- Power factor PF
- Temperature °C display
- KPa/Psi/Bar display
- Battery voltage V
- Running Hour
- Starting timer:(999999)



Standard Protection

Genset Protection

- Programmable I/O signal
- Emergency stop

Engine Protection

- Stop for over speed
- Low oil pressure
- High Coolant temperature
- Sensor fail
- Alarm for low/high battery voltage
- Low battery voltage
- Fail to start/Cranking fail

Alternator Protection

- Over Voltage
- Over current
- Voltage signal lost
- Over Voltage
- Over frequency
- Under frequency

Control System Components

- Manual/auto/stop/start
- Setting button
- Fault status indicators
- Screen menu selection button
- Emergency stop button
- Digital displayer



Communication Interface (Option)

- International standard MODBUS communication protocol RS232/ RS485 is suitable for remote control and monitor; It is easy integrated with SCADA;

Notes: Above data of controller comes from POWERTEC GC6110. Customized solutions is available as required

Genset

Model	PYC550B
Prime Rating (kw)	400
Standby Rating (kw)	440
Rate voltage(V)	400
Rate current(A)	722
Power factor	0.8
Frequency(Hz)	50

Engine

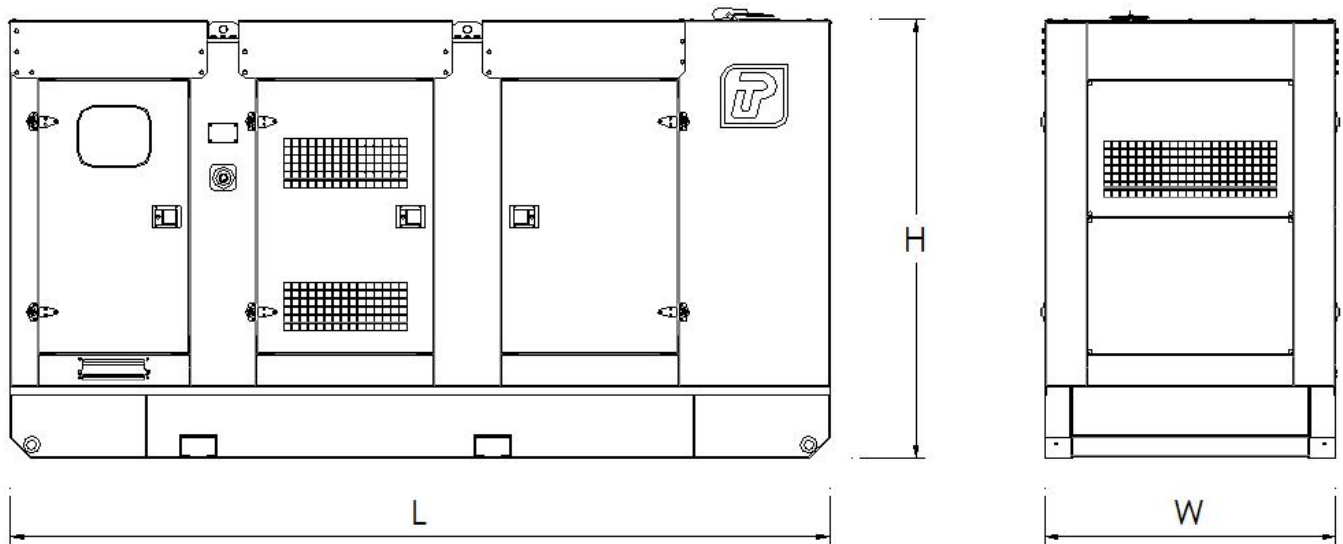
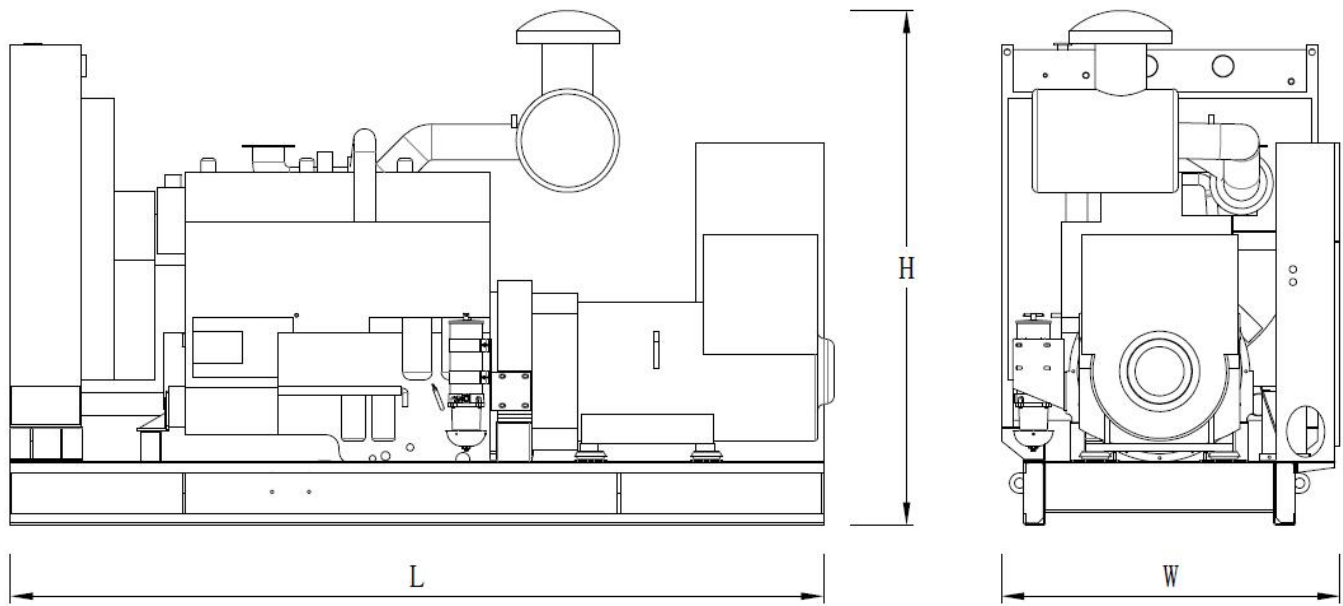
Engine Model	YC6T660L-D20
Gross Engine output-Prime (kw)	441
Gross Engine output-Standby (kw)	485
Bore * stroke (mm)	145*165
Cylinders and structure	6 In line
Displacement(Liter)	16.35
Compression Ratio	15.1:1
Intake way	Turbo Charge, Air-Air Intercool
Max intake resistance (KPa)	5
Air intake (m3/h)	1440
Max exhaust back pressure (KPa)	10
Exhaust gas flow (m3/h)	4020
Exhaust temp (°C)	520
Cooling way	Water Radiator & Fan
Fan exhaust flow (m3/min)	618
Coolant capacity (L)	89
Highest water temperature(°C)	110
Minimum air opening to room (m2)	3.0/2.8
Thermostat range (°C)	75-85
Max oil temperature (°C)	115
Lubrication system oil capacity (L)	52
Rate load fuel consumption(L/H)	108
Standard Governor/Class	Electronic

Alternator

Rated Voltage(V)	400/230
Output Way	3 Phases, 4 wires
Rated power factor	0.8
Exciter	Brushless, Self-exciter
Max voltage regulation	±1%
Phase	3
Protection class	IP21-23
Insulation class	H

Controller

Brand	POWERTEC or DEEPSEA
-------	---------------------



Type	Dimension (mm) (L*W*H)	Weight (kg)	Fuel Tank Capacity (L)
Open Type	3428*1398*1754	3679	-
Silent Type	4700*1700*2450	5629	1000

Contact Us

Powertec Generator System Co., Ltd

Add: Danshui Yanna Industry Zone, Huiyang, Huizhou, Guangdong, China
Tel: +86 752-3911119 / 3911118
Fax: +86 752-3911110
Web: www.powertec.com.cn
Email: powertec@powertec.com.cn